

**CONSTRUCTION – TRADING – SERVICE CO.,LTD**

**HONG TIN**



**COMPANY BROCHURE**



## TABLE OF CONTENTS

GENERAL INTRODUCTION .....	04
SCOPE OF OPERATIONS .....	06
ORGANIZATIONAL STRUCTURE .....	08
FINANCIAL CAPACITY .....	10
HUMAN RESOURCES CAPABILITY .....	10
PLANTS - FACTORIES .....	11
REPRESENTATIVE PROJECTS .....	14
CUSTOMER TESTIMONIALS .....	34
CUSTOMERS - KEY PARTNERS .....	35



## GENERAL INTRODUCTION

Established in 2007, Hong Tin Construction - Trading - Service Company Limited specializes in consulting and executing civil and industrial construction projects. With a team of experienced engineers and a system of advanced structural steel and concrete product plants, Hong Tin provides comprehensive solutions to meet every requirement regarding quality standards and progress for projects.

Over 15 years of development and growth, leveraging its strength and experience, Hong Tin has always adhered to the core values of "FAITH - QUALITY - EFFICIENCY" on every construction site, with the commitment to excellence at every step.

**In 2013:** Establishment of **HONG QUANG CONSTRUCTION DESIGN CONSULTANT COMPANY LIMITED**

**In 2015:** Establishment of **HONG TIN CONCRETE PLANT** in conjunction with **HONG TIN STRUCTURAL STEEL AND MECHANICAL FACTORY**

**In 2017:** Establishment of **HONG TIN CONCRETE PLANT IN BINH DUONG**

**In 2021:** Establishment of **HONG TIN CONCRETE PLANT IN BINH PHUOC**

**In 2022:** Establishment of **HONG TIN PRE-ENGINEERED STRUCTURAL STEEL COMPANY IN BINH PHUOC**

**In 2023:** Establishment of **HONG TIN CONCRETE PLANT - PHU MY PLANT**



## LEGAL INFORMATION

**Company name:** HONG TIN CONSTRUCTION TRADING SERVICE COMPANY LIMITED

**International name:** HONG TIN Trading Service Construction Co.,ltd

**Tax code:** 0305197657

**Address:** C1.10 - The Crest Residence, 15 Tran Bach Dang St., Nbh.3, Thu Thiem Ward, Thu Duc City, HCMC

**Representative:** Mr. HA PHUC TIN

**Position:** Director

**Tel:** (+84) 28 6281 0220 – (+84) 28 6281 0440

**Fax:** (+84) 28 6281 0220

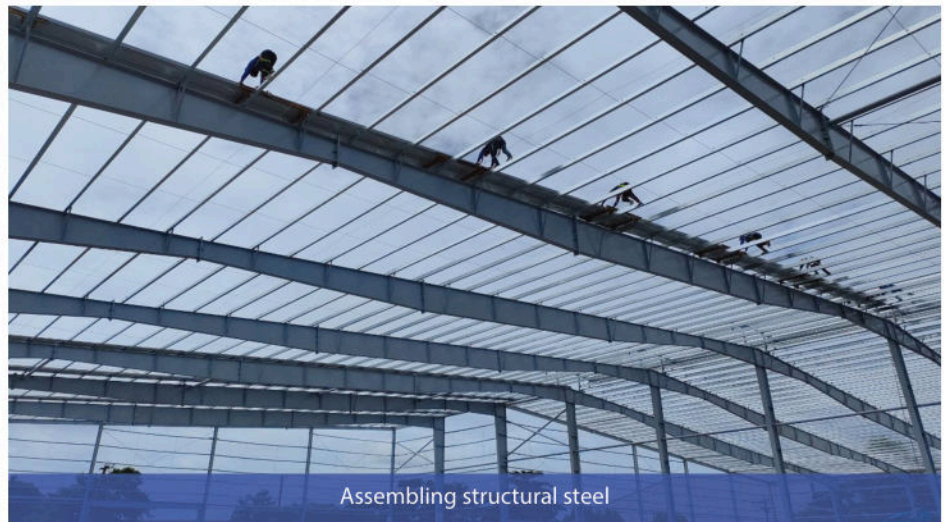
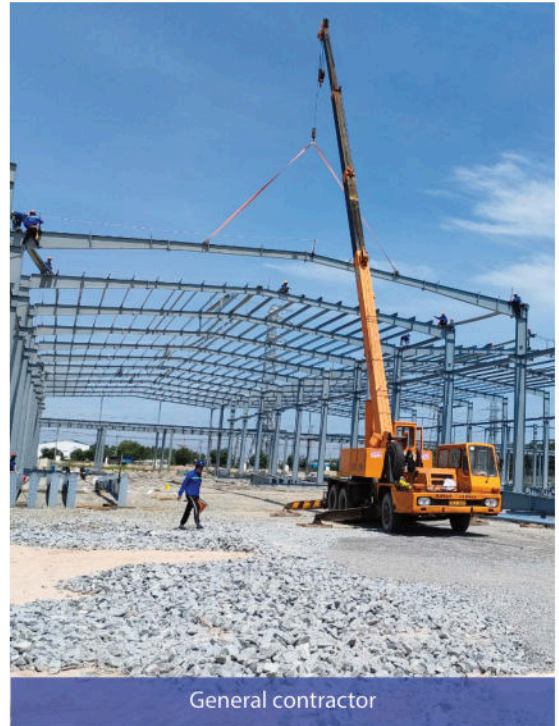
**Website:** [www.hongtinco.com.vn](http://www.hongtinco.com.vn)

**Email:** [hongtin@hongtinco.com.vn](mailto:hongtin@hongtinco.com.vn)



## SCOPE OF ACTIVITIES

As a company operating in the field of civil and industrial construction, **HONG TIN** always strives to improve the quality of its operations to meet the satisfaction and trust of its customers. Today, **HONG TIN** has expanded its scope of activities and solidified its position in the market with a complete service offering that enhances the core competencies in the construction industry: **Consulting, Design, General/Main Contractor, Supplying concrete for sites, and supplying Pre-engineered structural steel, as well as offering Ready-Built Factory for Lease.**



# CHỨNG CHỈ NĂNG LỰC HOẠT ĐỘNG XÂY DỰNG

Số: BXD- 00019489

(Ban hành kèm theo Quyết định số: 276/QĐ-CPN-DN ngày 26/6/2020)

Tên tổ chức: **CÔNG TY TNHH XÂY DỰNG - THƯƠNG MẠI - DỊCH VỤ HỒNG TÍN**

Giấy chứng nhận đăng ký doanh nghiệp/ Quyết định thành lập số: 0305197657

Ngày cấp: 18/9/2007. Thay đổi lần 12, ngày 07/8/2015.

Nơi cấp: Sở Kế hoạch và Đầu tư thành phố Hồ Chí Minh.

Tên người đại diện theo pháp luật:

Ông: Hà Phúc Tin

Chức vụ: Giám đốc

Địa chỉ trụ sở chính: Số 20 đường Song Hành, khu đô thị An Phú An Khánh,  
Phường An Phú, Quận 2, Thành phố Hồ Chí Minh.

Số điện thoại: 0902383488

Số fax:

E-mail:

Website:

Phạm vi hoạt động xây dựng:

- Thiết kế, thẩm tra thiết kế xây dựng công trình (công nghiệp nhẹ): Hạng I
- Thi công xây dựng công trình (công nghiệp nhẹ): Hạng I

Chứng chỉ này có giá trị đến hết ngày: 26/6/2030.

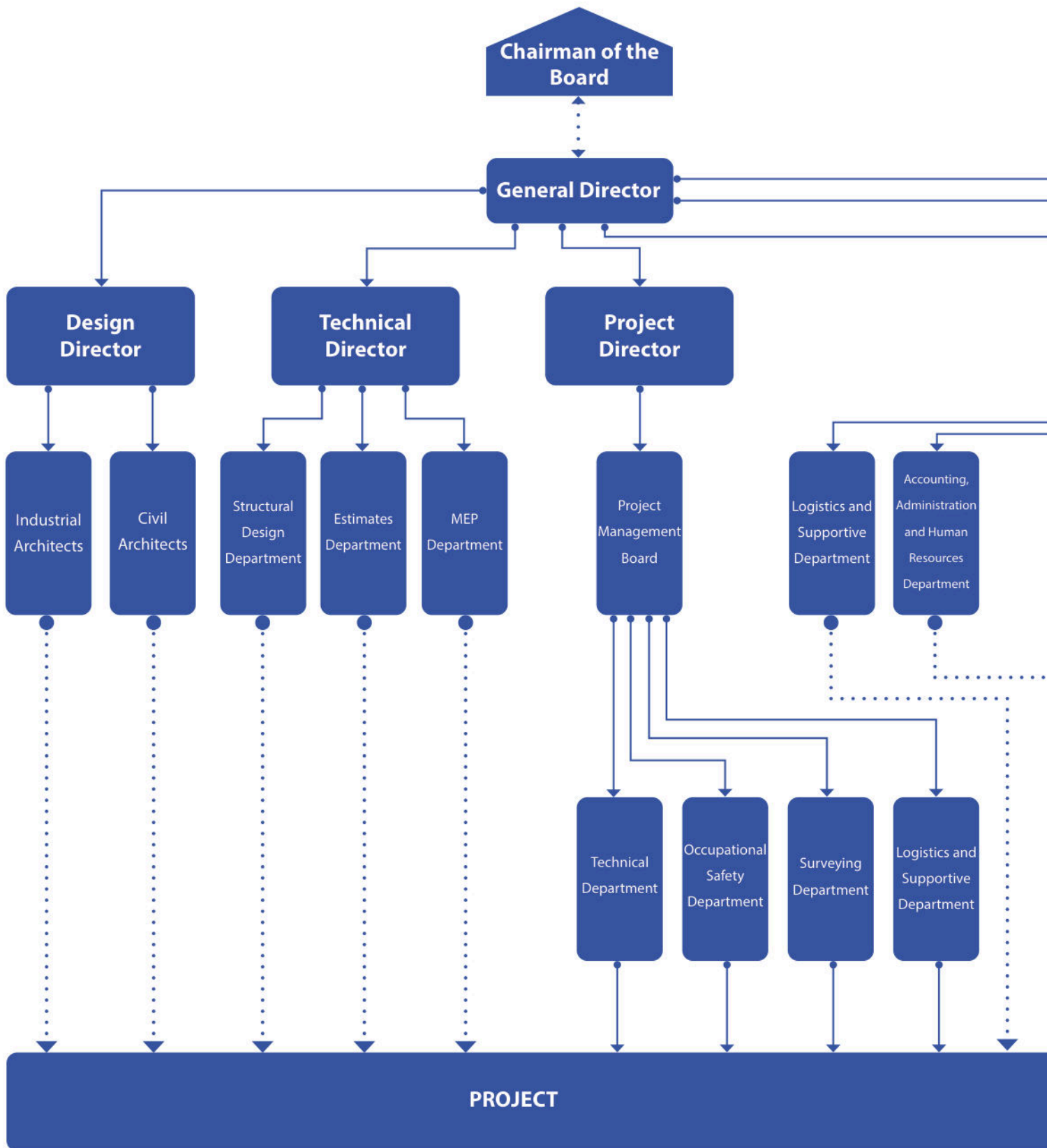
Tp Hồ Chí Minh, ngày 26 tháng 6 năm 2020

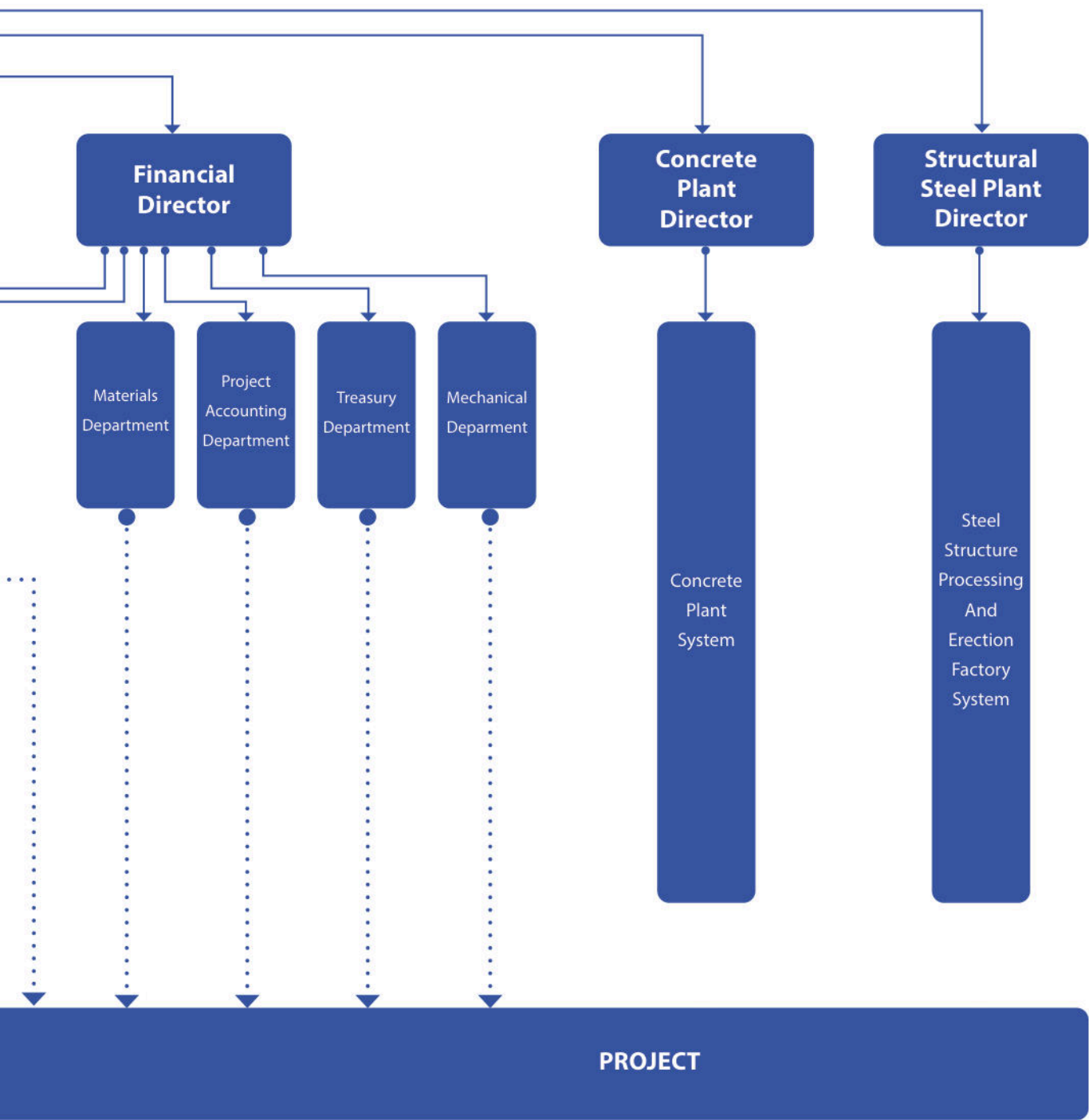
KT. CỤC TRƯỞNG  
PHÓ CỤC TRƯỞNG



Ngô Hoàng Nguyên

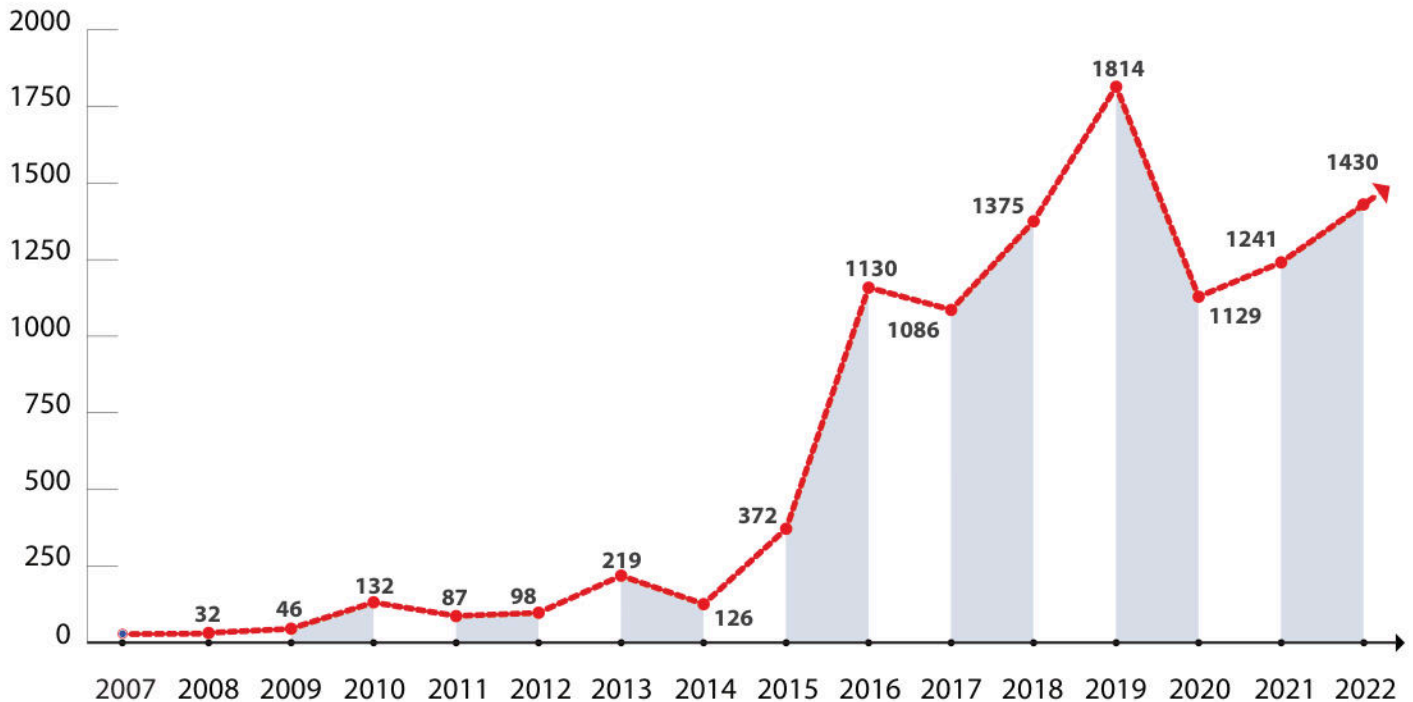
# ORGANIZATIONAL CHART





## FINANCIAL CAPABILITY

(Billion VND)

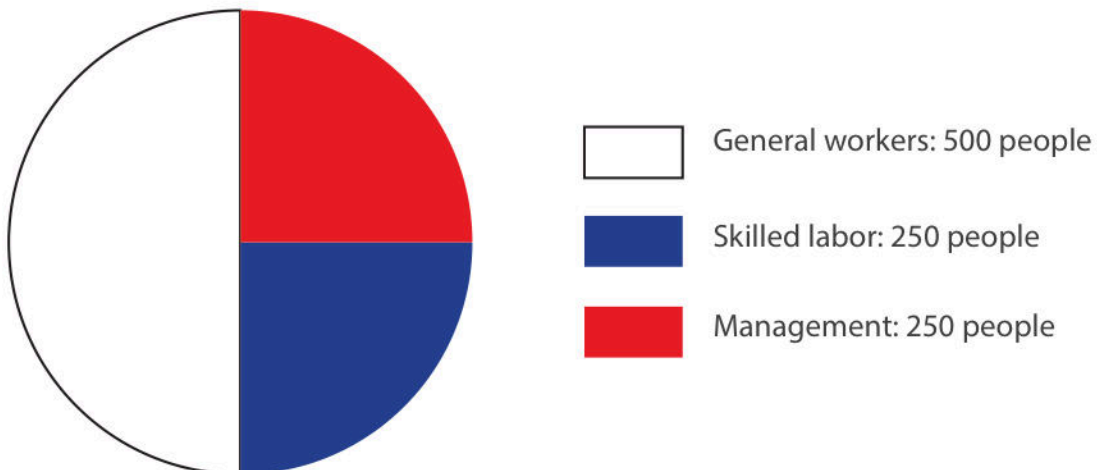


Revenue Growth Chart

## HUMAN RESOURCE CAPABILITIES

**HONG TIN** considers people as the foundation and the heart of the company's development. We are proud to have more than 1000 employees who possess "**Heart - Vision - Intellect - Trust**", which are honed through projects that carry our international commitment. The human resources of **HONG TIN** always focus on seven principles:

- » **HONG TIN** continuously improves specialized knowledge and industry service expertise
- » Offers harmony with customers, taking customers as the central focus
- » Nurtures a dynamic and creative approach to proposing optimal solutions
- » Goes the extra mile to overcome challenges and courageously face adversity
- » Takes work to heart, with passion and love for the profession
- » Invests time to listen quietly and deeply understand the spirit of teamwork
- » Nurtures the qualities of **Heart - Vision - Intellect - Trust** within its people



## PLANTS - FACTORIES

**HONG TIN** owns two modern high-capacity structural steel plants and three high-performance concrete plants equipped with advanced systems, located in Binh Duong, Binh Phuoc, and Ba Ria

Vung Tau. These plants play a crucial role in helping the company maintain strict quality control and timely delivery for projects, meeting all customer demands.



### **Hong Tin Structural Steel Plant - Binh Duong**

**Location:** Rach Bap Industrial Park, An Tay Ward, Ben Cat Town, Binh Duong Province

**Size:** 10.358 m<sup>2</sup>

**Capacity:** 1000 tons/month



### **Hong Tin Structural Steel Plant - Binh Phuoc**

**Location:** Becamex Industrial Park – Binh Phuoc, Chon Thanh District, Binh Phuoc Province

**Size:** 31.977 m<sup>2</sup>

**Capacity:** 1000 tons/month





**Hong Tin Concrete Plant - Binh Duong**

**Location:** Tan Binh Industrial Park, Bau Bang District, Binh Duong Province

**Size:** 20.000 m<sup>2</sup>

**Capacity:** 2 x 120 m<sup>3</sup>/h

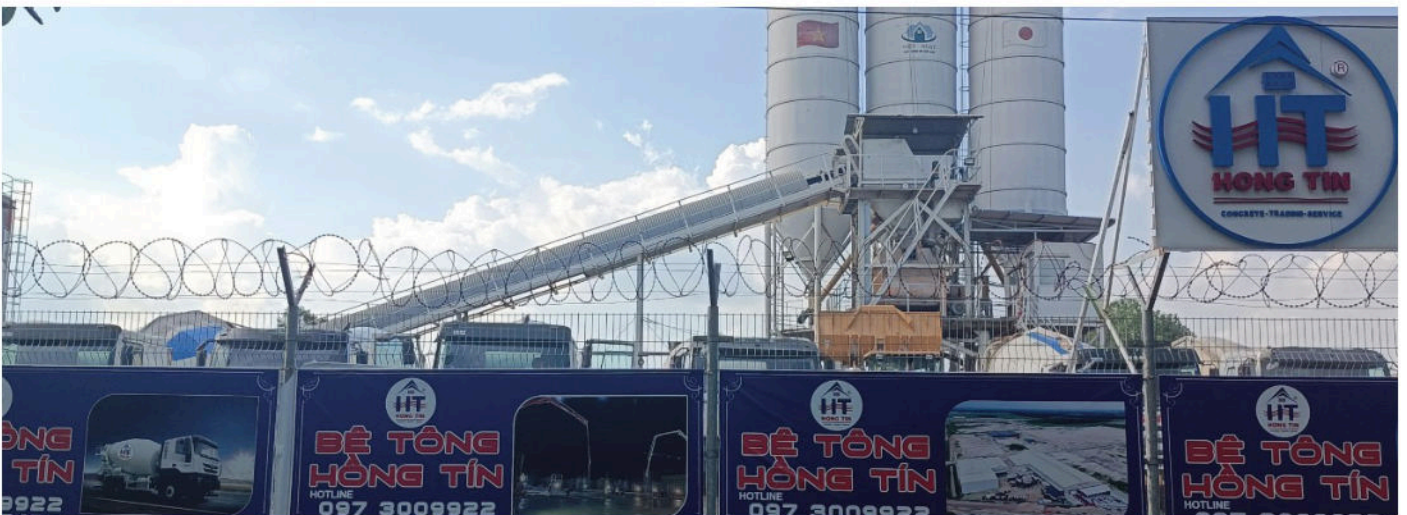


**Hong Tin Concrete Plant - Binh Phuoc**

**Location:** Becamex Industrial Park – Binh Phuoc, Chon Thanh District, Binh Phuoc Province

**Size:** 13.264 m<sup>2</sup>

**Capacity:** 3 x 120 m<sup>3</sup>/h



**Hong Tin Concrete Plant - Tram Phu My**

**Location:** Phu My 1 Industrial Park, Phu My Town, Ba Ria - Vung Tau Province

**Size:** 5.500 m<sup>2</sup>

**Capacity:** 120 m<sup>3</sup>/h





**Hong Tin Factory for Rent**

**Location:** Rach Bap Industrial Park, Ben Cat Town, Binh Duong Province

**Size:** 60.000 m<sup>2</sup>



**An Tam Factory for Rent**

**Location:** Thoi Hoa Industrial Park, Ben Cat Town, Binh Duong Province

**Size:** 61.000 m<sup>2</sup>



## DỰ ÁN TIÊU BIỂU

- » O Mon Thermal Power Plant
- » Di An Commercial Center
- » E.Town Building
- » Sailing Building
- » Eins Vina Factory
- » TBS Factory
- » Asia Packaging Factory

**2007**

- » **Dai Nam Tourist Area**
- » Nhon Trach Thermal Power Plant
- » Hoang Gia Residential Area
- » Song Than Industrial Park Infrastructure
- » Orion Factory
- » Deawon Factory
- » LG Vina Factory

**2008**

- » **Kingtec VN Co., Ltd Factory (Phase I)**
- » **DDK Factory (Phase I)**
- » Bowker Factory (K5)
- » TMV Vina Factory
- » Panko Vina 07 Factory
- » Olympia Lighting Vietnam Factory
- » Chuubu Kougyou Factory
- » Bowker Factory (K4)
- » **Panko Vina 2 Factory**
- » Dong An 2 Rental Factory
- » Ton Dong A Office

**2013 - 2014**

**Total consolidated  
project area: 284.459 m<sup>2</sup>**

- » Golden Fortuner Factory
- » **Panko Tam Thang Factory**
- » Viet Hung Saigon Packaging Factory
- » XLNT Panko Tam Thang Factory
- » Ducksan Vina Factory
- » Daehan Motor Factory
- » Hong Tin Concrete Tam Thang Factory
- » Phu Duc Steel Warehouse
- » **Kaiser II Factory**

**2015**

**Total consolidated  
project area: 652.055 m<sup>2</sup>**

- » **Chutex Factory**
- » Polytex Far Eastern (Phase III)
- » **Waytex Factory**
- » **MPF Vietnam Factory**
- » Teco Factory
- » Great JD Factory
- » DDK (Phase II)
- » Chao Long Factory
- » Yung-Shyang Factory
- » Thanh Long Roof Tile Factory

**2018**

**Total consolidated  
project area: 451.976 m<sup>2</sup>**

- » **Kingtec VN Co., Ltd  
Factory (Phase III)**
- » King Way Factory
- » Hong Zhen Factory (Phase II)
- » **Ampacs Factory**
- » Almax Aluminium Factory
- » T-Star Factory

**2019**

**Total consolidated  
project area: 222.655 m<sup>2</sup>**



- » Hung Xuong Chemical Factory
- » Viet Long Packaging Factory
- » Domina Spinning Mill
- » Poong In Vina Factory

**2009**

- » Tiep Phat Factory
- » **Evertex Plastic Factory**
- » Shinwa Viet Nam Factory
- » Isho Vietnam Factory
- » Panko Vina 2 Factory
- » **Cat Phu Paper Factory**
- » **Sovi Paper Factory**
- » Ryobi Factory
- » **Chinh Long Paper Factory**

**2010 - 2012 Total consolidated project area: 282.028 m<sup>2</sup>**

- » SGX Factory (Phase II)
- » Accasette Factory
- » Yonglong Factory
- » Young Jin Vina Factory
- » Hong Zhen VN Factory
- » HQ Glass and Aluminum Factory
- » Moon Chang Vina Factory
- » **Polytex Far Eastern (Phase I)**
- » **Caisa Vina Factory**
- » Sung Min Vina Factory
- » Hong Tin Rental Factory (Phase I)

**2016**

**Total consolidated project area: 305.851 m<sup>2</sup>**

- » Panko E&D Factory
- » Hong Tin Rental Factory (Phase II)
- » Kingtec VN Co., Ltd Factory (Phase II)
- » **Yue Chang Factory**
- » Hong Tin Concrete Binh Duong Factory
- » Polytex Far Eastern (Phase II)
- » Hong Zhen (Phase II)
- » **Leeda Factory**
- » H.Seven Factory

**2017**

**Total consolidated project area: 200.696 m<sup>2</sup>**

- » **Hayat Kimya VN (Phase I)**
- » Sunfiber Vietnam Factory
- » An Tam Rental Factory (Phase I)
- » Hong Tin Concrete Binh Phuoc Factory
- » CP Company Skilled Labor HTC Factory
- » Sanaky Factory
- » An Tam Rental Factory (Phase II)
- » **Fookyik (Phase II)**
- » All Seven Factory
- » Cheng Loong Factory

**2020**

**Total consolidated project area: 685.286 m<sup>2</sup>**

- » Clearwater Metal VN Factory
- » Sewang VN Factory
- » Rhine Precision Alloy VN Factory
- » Fookyik (Phase III)
- » An Lam Thoi Hoa Rental Factory
- » Hong Tin Structural Steel Binh Phuoc Factory
- » First Industries (Phase II)
- » **Tan Phong (Phase I)**
- » The Hoa Rental Factory

**2021 - 2022**

**Total consolidated project area: 531.746 m<sup>2</sup>**



## DAI NAM TOURISM AREA

- » **Investor:** DAI NAM JSC
- » **Location:** Thu Dau Mot City, Binh Duong Province
- » **Scale:** 2.500.000 m<sup>2</sup>
- » **Scope of Work:** Construction contractor
- » **Year:** 2008



## DAI NAM TOURISM AREA

- » **Investor:** CAT PHU CO., LTD
- » **Location:** Dai Dang Industrial Park, Thu Dau Mot City, Binh Duong Province
- » **Scale:** 80,960 m<sup>2</sup>
- » **Scope of Work:** Design and construction
- » **Year:** 2010



## CHINH LONG FACTORY

- » **Investor:** CHENG LOONG CORP
- » **Location:** Song Than 3 Industrial Park, Thu Dau Mot City, Binh Duong Province
- » **Scale:** 80,960 m<sup>2</sup>
- » **Scope of Work:** Design and construction
- » **Year:** 2010



## SOVI FACTORY

- » **Investor:** BIEN HOA PACKAGING JOINT STOCK COMPANY
- » **Location:** My Phuoc III Industrial Park, Ben Cat District, Binh Duong Province
- » **Scale:** 57,300 m<sup>2</sup>
- » **Scope of Work:** Design and construction
- » **Year:** 2011



## EVER TECH PLASTIC VN FACTORY

- » **Investor:** PANKO VINA
- » **Location:** Tan Uyen Town, Binh Duong Province
- » **Scale:** 45,768 m<sup>2</sup>
- » **Scope of Work:** Design and construction
- » **Year:** 2012



## PANKO VINA 2 FACTORY

- » **Investor:** PANKO VINA
- » **Location:** My Phuoc I Industrial Park, Ben Cat District, Binh Duong Province
- » **Scale:** 20,000 m<sup>2</sup>
- » **Scope of Work:** Design and construction
- » **Year:** 2014



## DDK FACTORY (Phase 1)

- » **Investor:** TECHTRONIC INDUSTRIES VN MANUFACTURING CO., LTD
- » **Location:** Dai Dang Industrial Park, Thu Dau Mot City, Binh Duong Province
- » **Scale:** 70.000 m<sup>2</sup>
- » **Scope of Work:** Design and construction
- » **Year:** 2014



## KAISER 2 FACTORY

- » **Investor:** KAISER VIET NAM CO., LTD
- » **Location:** Rach Bap Industrial Park, Ben Cat Town, Binh Duong Province
- » **Scale:** 50,000 m<sup>2</sup>
- » **Scope of Work:** Design and construction
- » **Year:** 2015



# PANKO TAM THĂNG FACTORY

- » **Investor:** PANKO TAM THANG CO., LTD
- » **Location:** Tam Thang Industrial Park, Tam Ky City, Quang
- » **Scale:** 300,000 m<sup>2</sup>
- » **Scope of Work:** Design and construction
- » **Year:** 2015





# POLYTEX FAR EASTERN FACTORY

- » **Investor:** POLYTEX FAR EASTERN VIET NAM CO., LTD
- » **Location:** Bau Bang Industrial Park, Bau Bang District, Binh Duong Province
- » **Scale:** 993,000 m<sup>2</sup>
- » **Scope of Work:** Construction contractor
- » **Year:** 2016





## CAISA FACTORY

- » **Investor:** CAISA VINA
- » **Location:** My Phuoc III Industrial Park, Ben Cat District, Binh Duong Province
- » **Scale:** 22,143 m<sup>2</sup>
- » **Scope of Work:** Design and construction
- » **Year:** 2016



## LEEDA FACTORY

- » **Investor:** LEEDA VIET NAM
- » **Location:** Bau Bang Industrial Park, Bau Bang District, Binh Duong Province
- » **Scale:** 17,625 m<sup>2</sup>
- » **Scope of Work:** Design and construction
- » **Year:** 2017



## YUE CHANG FACTORY

- » **Investor:** YUE CHANG VIET NAM CO., LTD
- » **Location:** Bau Bang Industrial Park, Bau Bang District, Binh Duong Province
- » **Scale:** 29,994 m<sup>2</sup>
- » **Scope of Work:** Design and construction
- » **Year:** 2017



## CHUTEX FACTORY

- » **Investor:** CHUTEX VIET NAM
- » **Location:** Song Than Industrial Park, Di An Town, Binh Duong Province
- » **Scale:** 67,025 m<sup>2</sup>
- » **Scope of Work:** Construction contractor
- » **Year:** 2018



# MPF VIETNAM FACTORY

- » **Investor:** MPF (VIETNAM) INTERNATIONAL CO., LTD
- » **Location:** Bau Bang Industrial Park, Bau Bang District, Binh Duong Province
- » **Scale:** 80,000 m<sup>2</sup>
- » **Scope of Work:** Design and construction
- » **Year:** 2018



# WAYTEX FACTORY

- » **Investor:** WAYTEX GROUP
- » **Location:** Bau Bang Industrial Park, Bau Bang District, Binh Duong Province
- » **Scale:** 80,000 m<sup>2</sup>
- » **Scope of Work:** Design and construction
- » **Year:** 2018



# AMPACS FACTORY

- » **Investor:** AMPACS INTERNATIONAL CO., LTD
- » **Location:** Bau Bang Industrial Park, Bau Bang District, Binh Duong Province
- » **Scale:** 67,970 m<sup>2</sup>
- » **Scope of Work:** Design and construction
- » **Year:** 2019





# KINGTEC VIETNAM CO., LTD FACTORY

- » **Investor:** KINGTEC VIETNAM CO., LTD
- » **Location:** My Phuoc III Industrial Park, Ben Cat District, Binh Duong Province
- » **Scale:** 100,000 m<sup>2</sup>
- » **Scope of Work:** Design and construction
- » **Year:** 2019



## ALL SEVEN FACTORY

- » **Investor:** HAND SEVEN
- » **Location:** Minh Hung - Sikico Industrial Park, Hon Quan District, Binh Phuoc Province
- » **Scale:** 54,000 m<sup>2</sup>
- » **Scope of Work:** Design and construction
- » **Year:** 2020



## HAYAT KIMYA VN (GĐ1) FACTORY

- » **Investor:** HAYAT KIMYA VN CO., LTD
- » **Location:** Becamex Industrial Park - Binh Phuoc, Chon Thanh District, Binh Phuoc Province
- » **Scale:** 320,056 m<sup>2</sup>
- » **Scope of Work:** Construction contractor
- » **Year:** 2020



# TAN PHONG INTERNATIONAL CO., LTD FACTORY

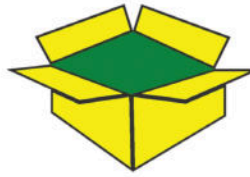
- » **Investor:** XIN FENG INTERNATIONAL CO., LTD
- » **Location:** Minh Hung - Sikico Industrial Park, Hon Quan District, Binh Phuoc Province
- » **Scale:** 81,000 m<sup>2</sup>
- » **Scope of Work:** Design and construction
- » **Year:** 2022







# CUSTOMERS – REPRESENTATIVE PARTNERS





**HONG TIN CONSTRUCTION - TRADING - SERVICE CO.,LTD**

 (+84) 28 6281 0220  
6281 0440

 [www.hongtinco.com.vn](http://www.hongtinco.com.vn)

 [hongtin@hongtinco.com.vn](mailto:hongtin@hongtinco.com.vn)

 C1.10 - The Crest Residence, 15 Tran Bach Dang St.,  
Nbh.3, Thu Thiem Ward, Thu Duc City, HCMC